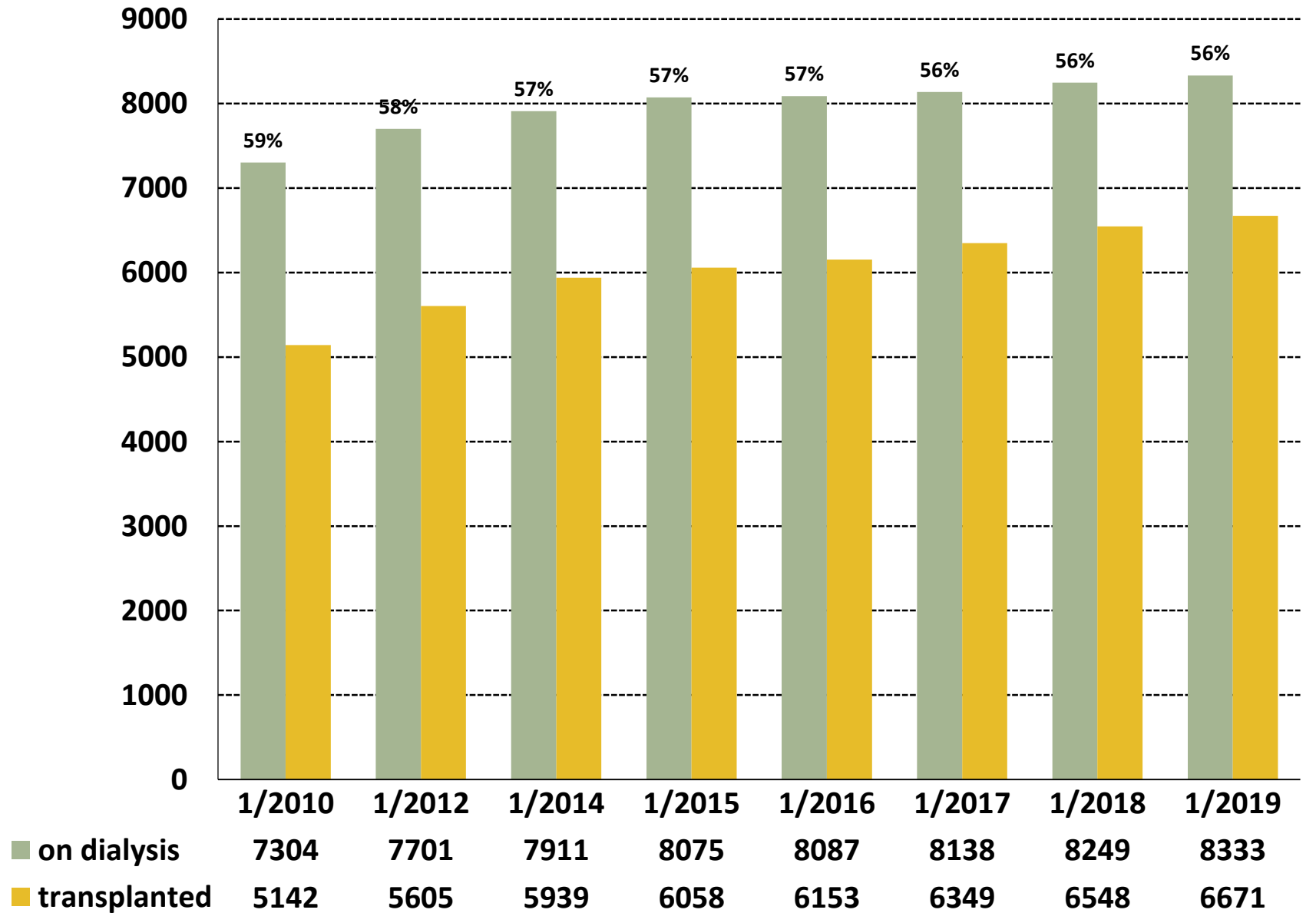




Collège de médecins

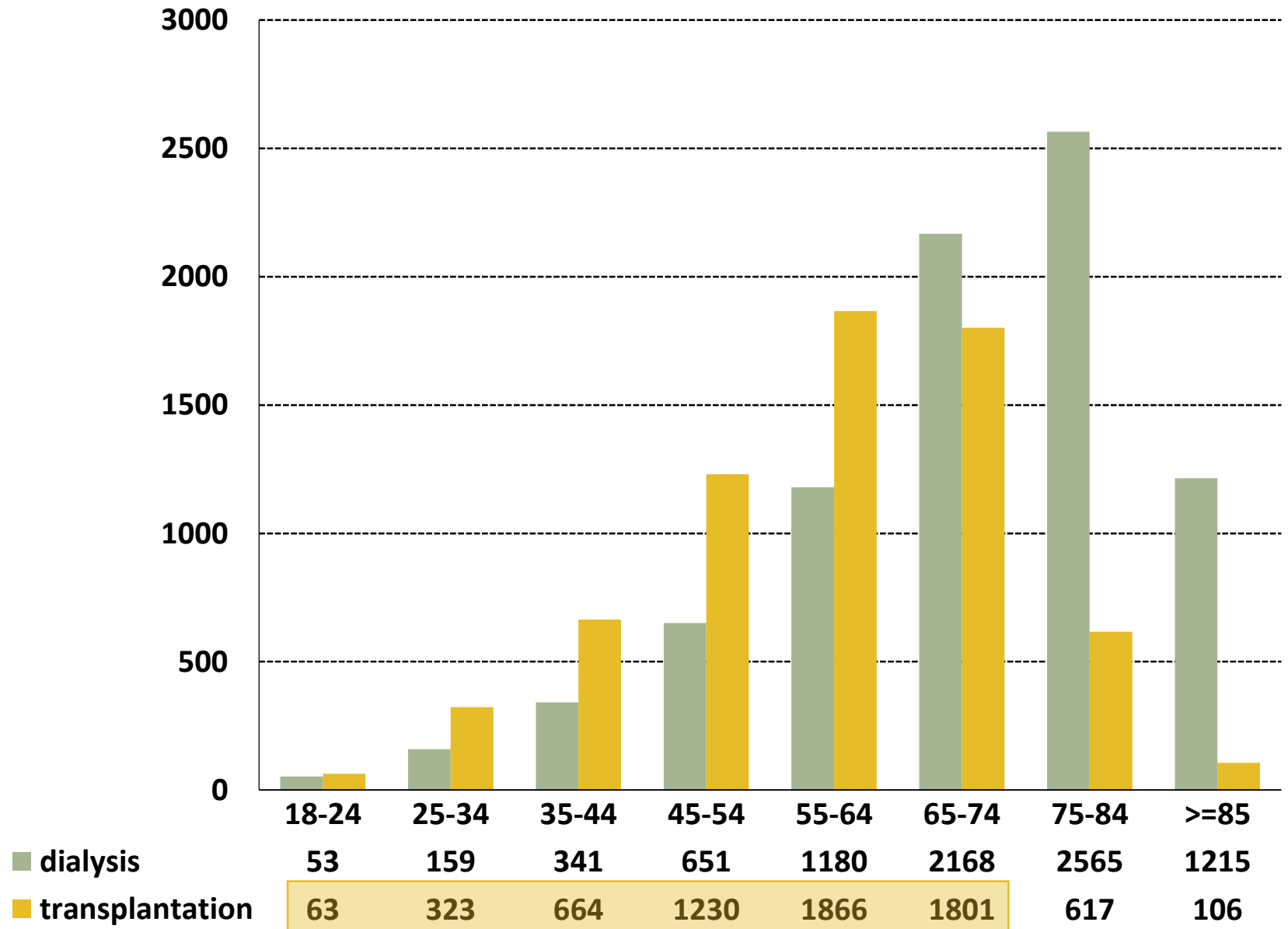


Total number patients on Renal Replacement Therapy on 1 January

12446 13306 13850 14133 14240 14487 14797 15004



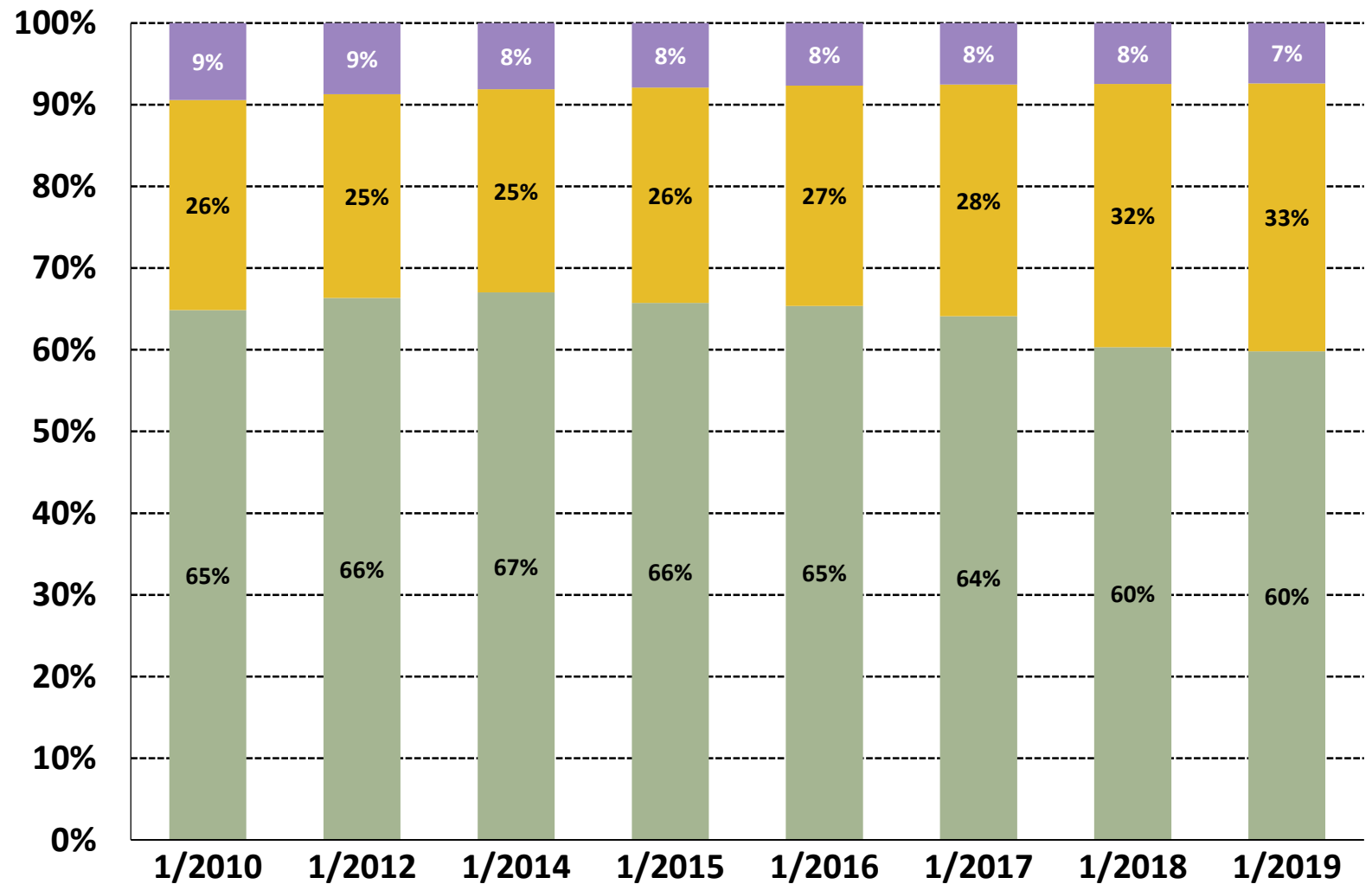
Collège de médecins



% transplant patients per age-group	18-24	25-34	35-44	45-54	55-64	65-74	75-84	>=85
	54%	67%	66%	65%	61%	45%	19%	8%



Collège de médecins



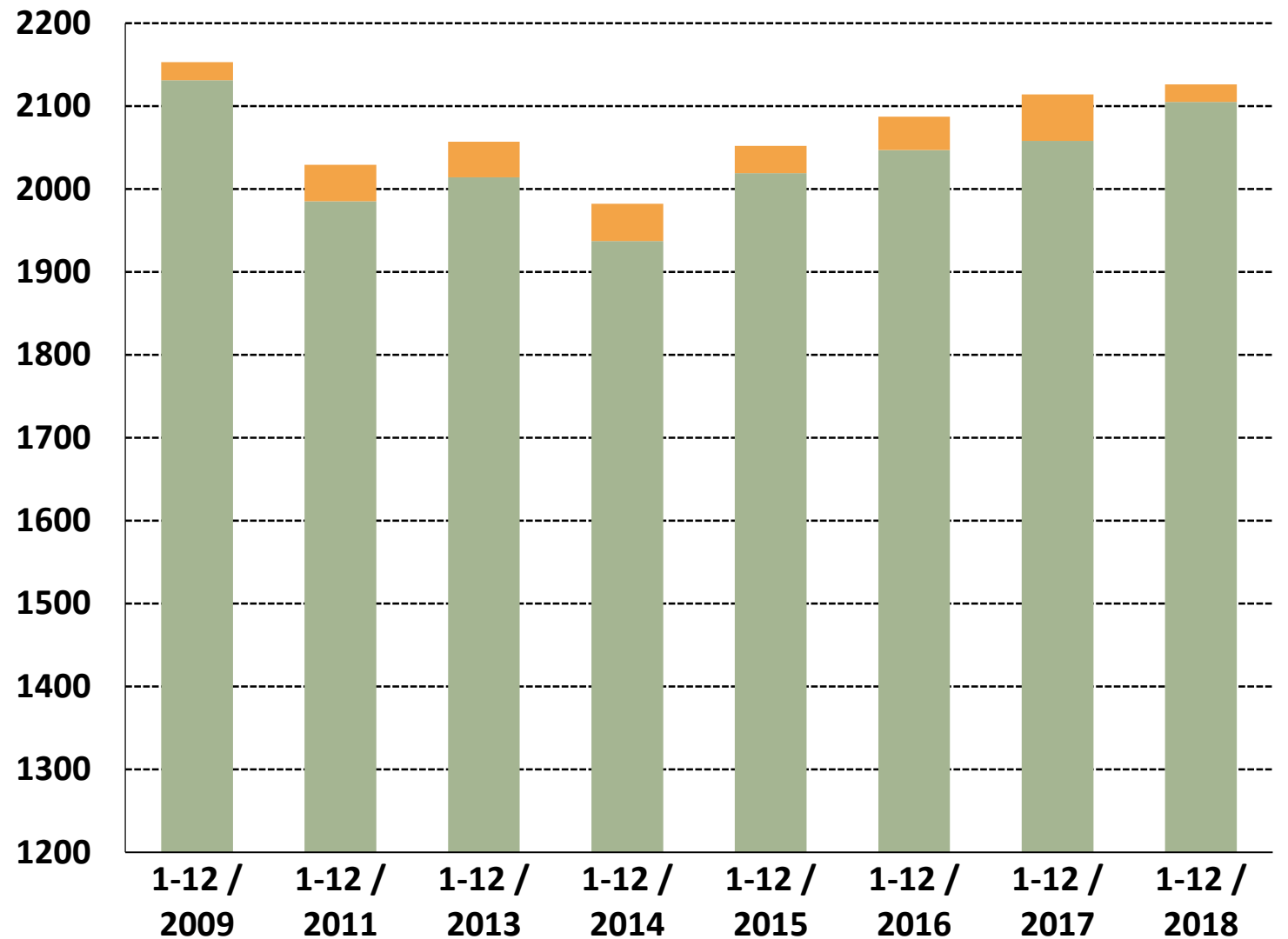
	1/2010	1/2012	1/2014	1/2015	1/2016	1/2017	1/2018	1/2019
Peritoneal dialysis	689	672	641	639	621	614	617	616
Hemodialysis - Low Care	1878	1919	1967	2127	2180	2306	2657	2732
Hemodialysis - High Care	4737	5110	5303	5309	5286	5218	4973	4985

Total number patients in dialysis
on 1 January

7304 7701 7911 8075 8087 8138 8247 8333



Collège de médecins



■ first start RRT with transplantation
■ first start RRT on dialysis

Inflow on Renal Replacement Therapy per year

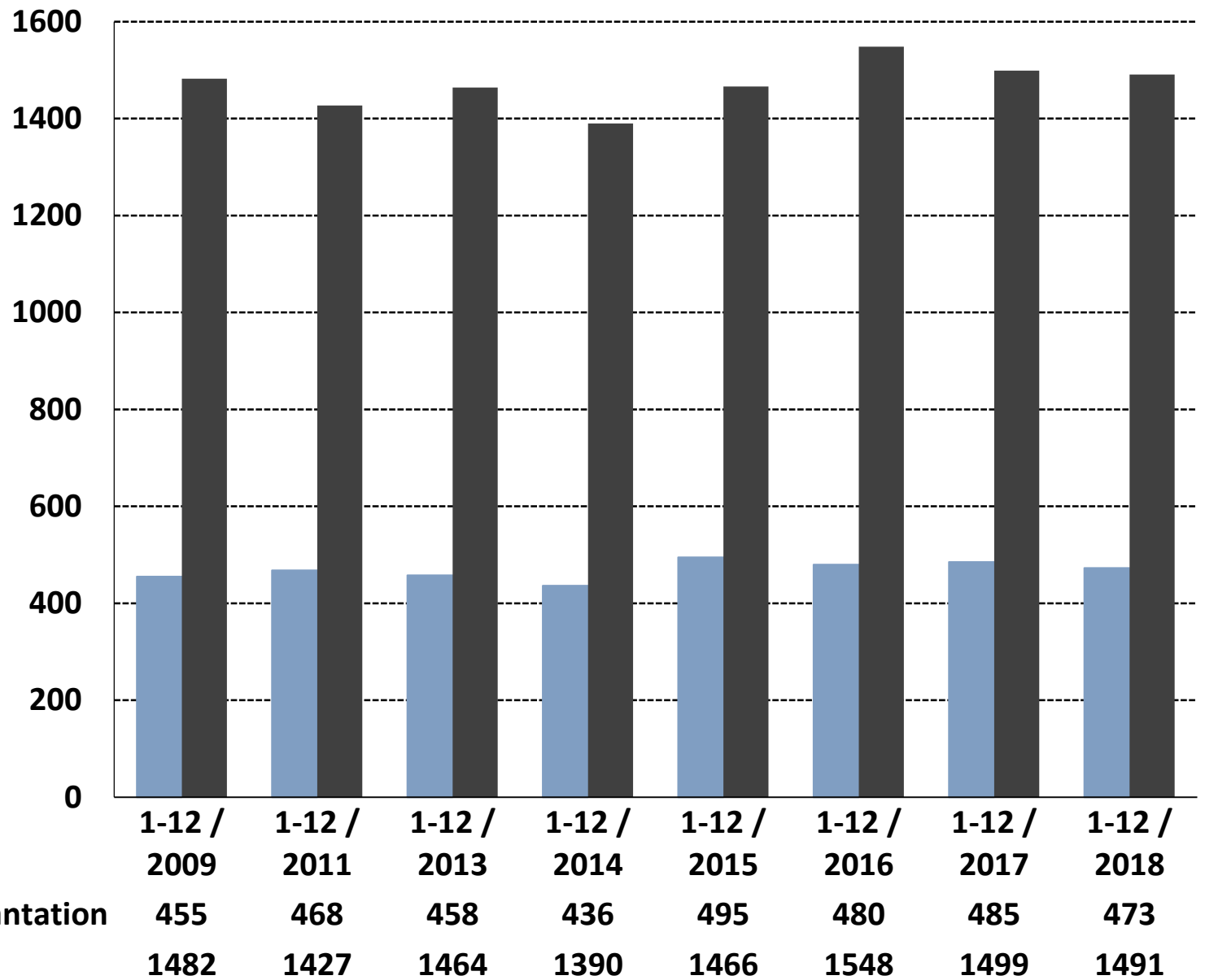
Total number patients – first start on dialysis

% difference per year – first start on HD or PD

2131	1985	2014	1937	2019	2047	2058	2105
			-4%	+4%	+1%	+0,5%	+2%



Collège de médecins



Outflow on dialysis per year

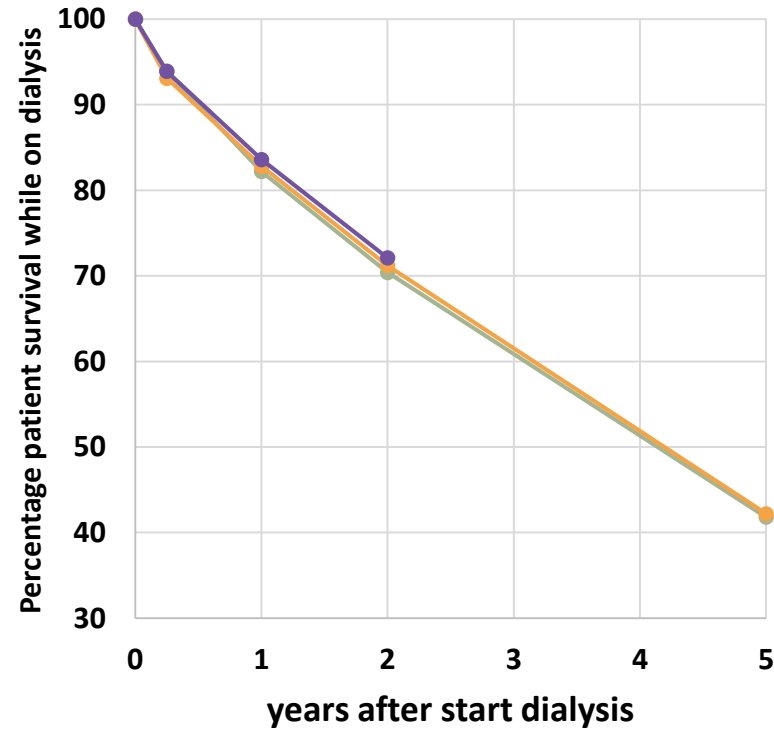
Mortality per 100 patient years

17,7 16,4 16,4 15,4 16,1 16,9 16,2 15,9



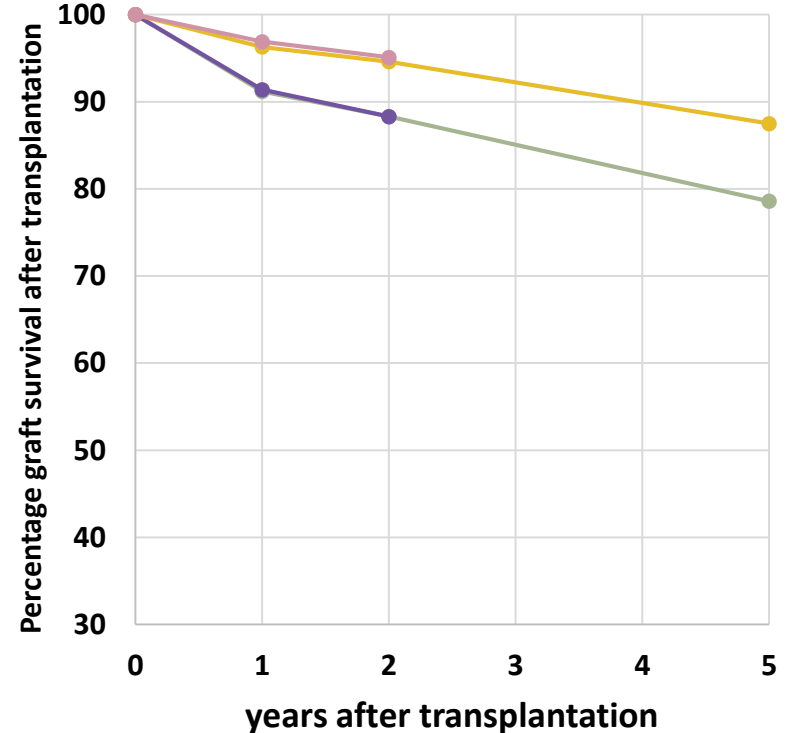
Collège de médecins

Patient survival - dialysis patients
Kaplan Meier method



- cohort 2006-2010
- cohort 2008-2012
- cohort 2011-2015

Kidney graft survival – transplant patients
Kaplan Meier method



- deceased donor - cohort 2008-2012
- deceased donor - cohort 2011-2015
- living donor - cohort 2008-2012
- living donor - cohort 2011-2015

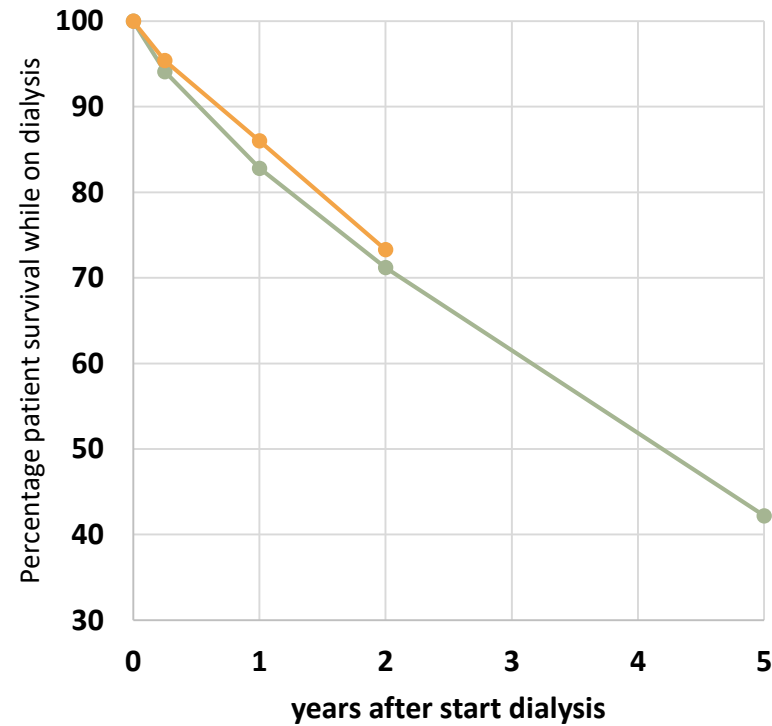
Survival analysis : patient survival of dialysis patients & kidney graft survival in transplant patients (deceased and living donor) - comparison of different cohorts

Analysis made by the ERA-EDTA registry



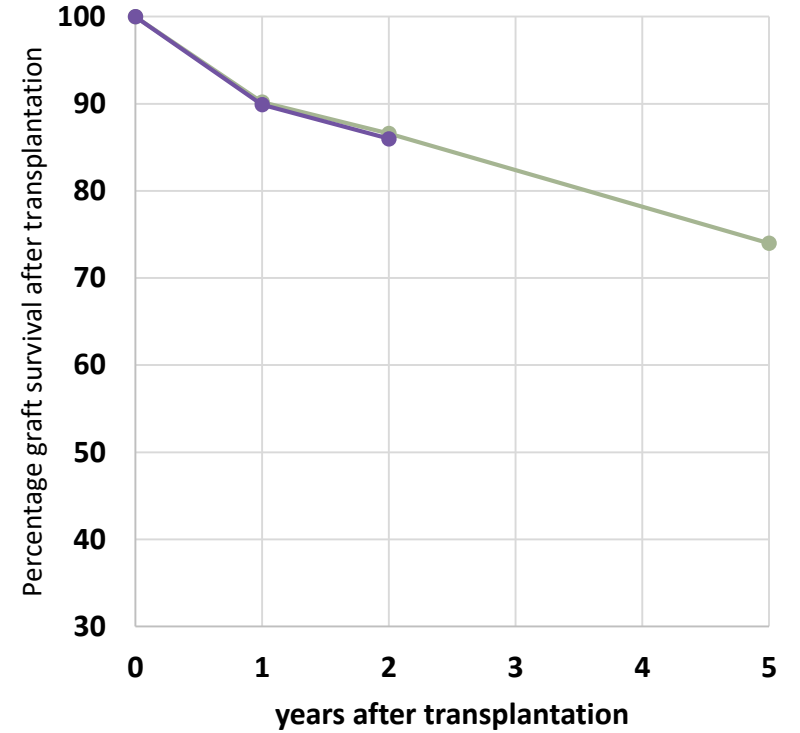
Collège de médecins

Patient survival - dialysis patients
renal disease = diabetic nephropathy
Kaplan Meier method



— DM - cohort 2008-2012
— DM - cohort 2011-2015

Kidney graft survival – transplant patients
renal disease = diabetic nephropathy
Kaplan Meier method

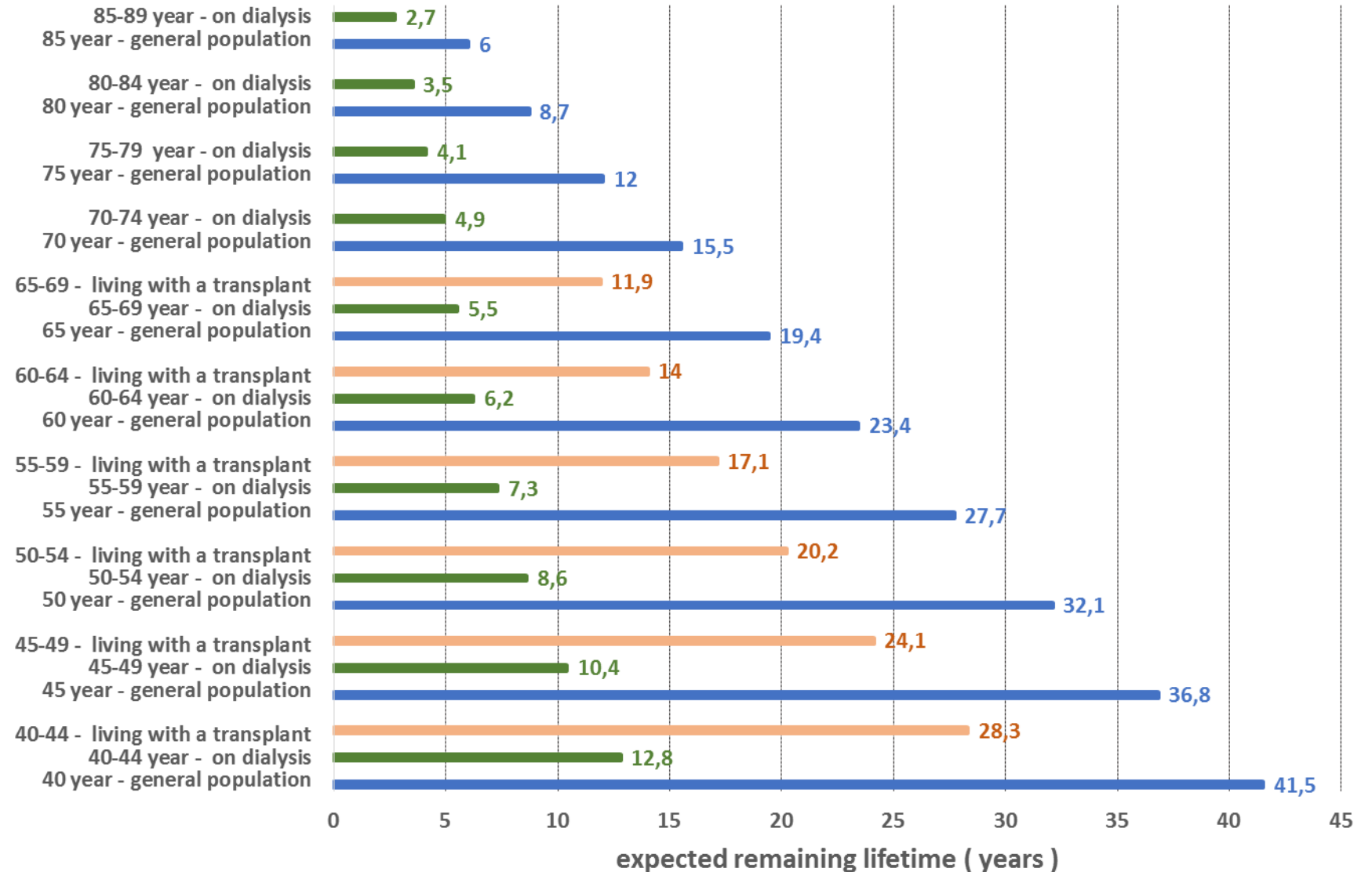


— DM - deceased donor - cohort 2008-2012
— DM - deceased donor - cohort 2011-2015

Survival analysis : patient survival of dialysis patients & kidney graft survival in transplant patients (deceased donor) - comparison of different cohorts
Analysis made by the ERA-EDTA registry



Collège de médecins



Expected remaining lifetime (years) for general population, patients on dialysis & patients living with a transplant - Belgium

Analysis made by the ERA-EDTA registry